

D2Day – Meeting 28/11/2023

Henri HAPPY

<https://edengsys.univ-lille.fr>

<https://edengsys.univ-lille.fr/en/>

D2Day - Meeting program

PhD Associations (Consulid, ADSL, IEEE chapter)

ENGYSYS doctoral school / Graduate school

D2 challenges

Strategies for the professional career

Doctoral training courses

Portfolio

Individual monitoring committee (CSI) review

Events of Doctoral College 2023-2024

Open source – Sustainable development

Social network

General introduction – Objectives of D2 Day

Exchange with you after 1 year of PhD

What is your feedback?

Are you familiar now with your research environment?

Give you complementary information about PhD

How to prepare the futur ...

New information about PhD

The expectations of Graduate School

Remind you of the **rights** and **duties** of doctoral students

Feedback on CSI

Information on new development in doctoral studies in France

GS ENGSYS – Staff

Direction

[*dir-edengsys@univ-lille.fr*](mailto:dir-edengsys@univ-lille.fr)
[*Henri.happy@univ-lille.fr*](mailto:Henri.happy@univ-lille.fr)

ED administration

sec-engsys@univ-lille.fr

Mrs Thi NGUYEN
Thi.Nguyen@univ-lille.fr

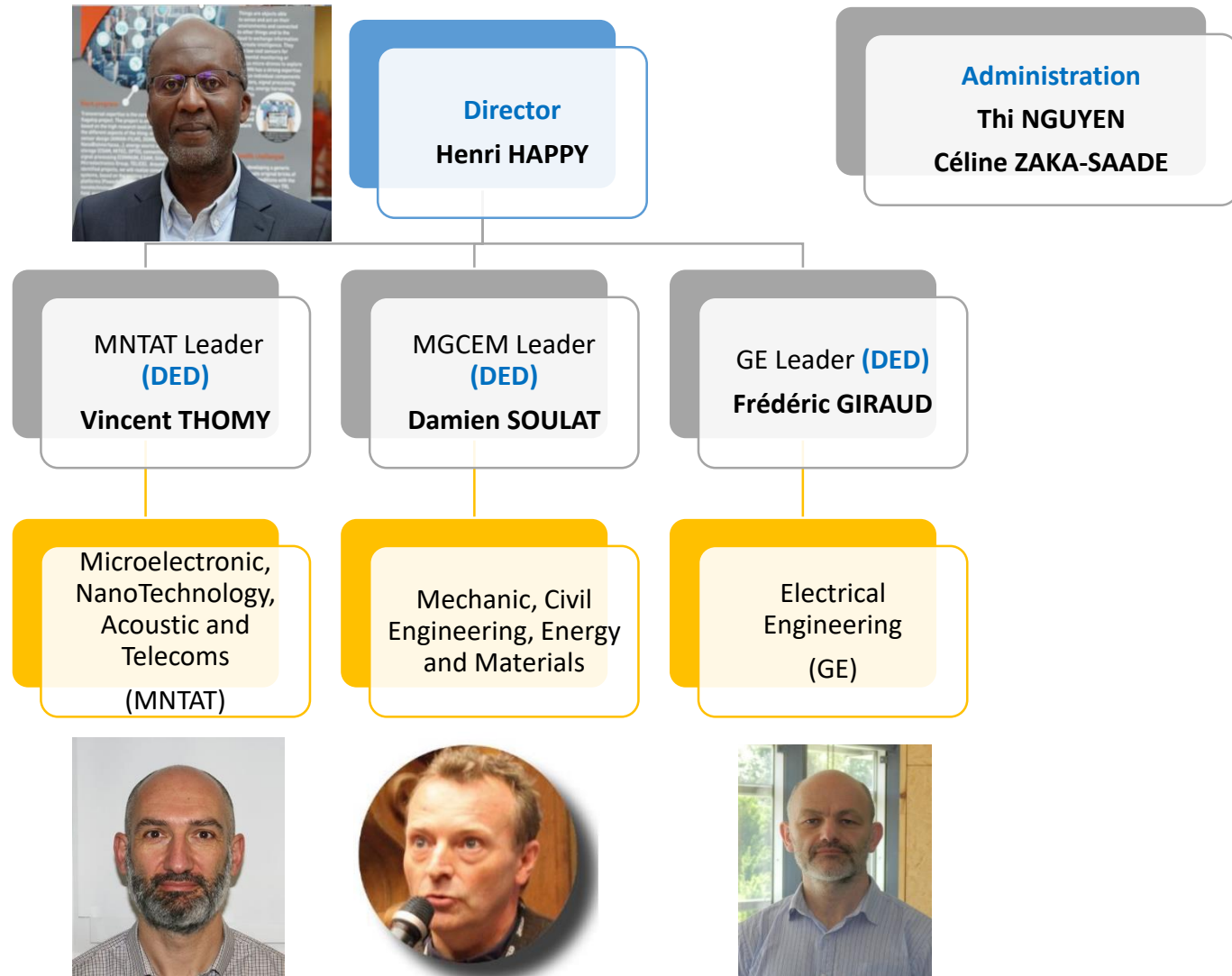
Mrs Céline ZAKA-SAADE
celine.saade@univ-lille.fr

Web site

<https://edengsys.univ-lille.fr>

GS ENGSYS - Organization

Executive Board



D2Day - Meeting program

PhD Associations (Consulid, ADSL, IEEE chapter)

ENGYSYS doctoral school / Graduate school

D2 challenges

Strategies for the professional career

Doctoral training courses

Portfolio

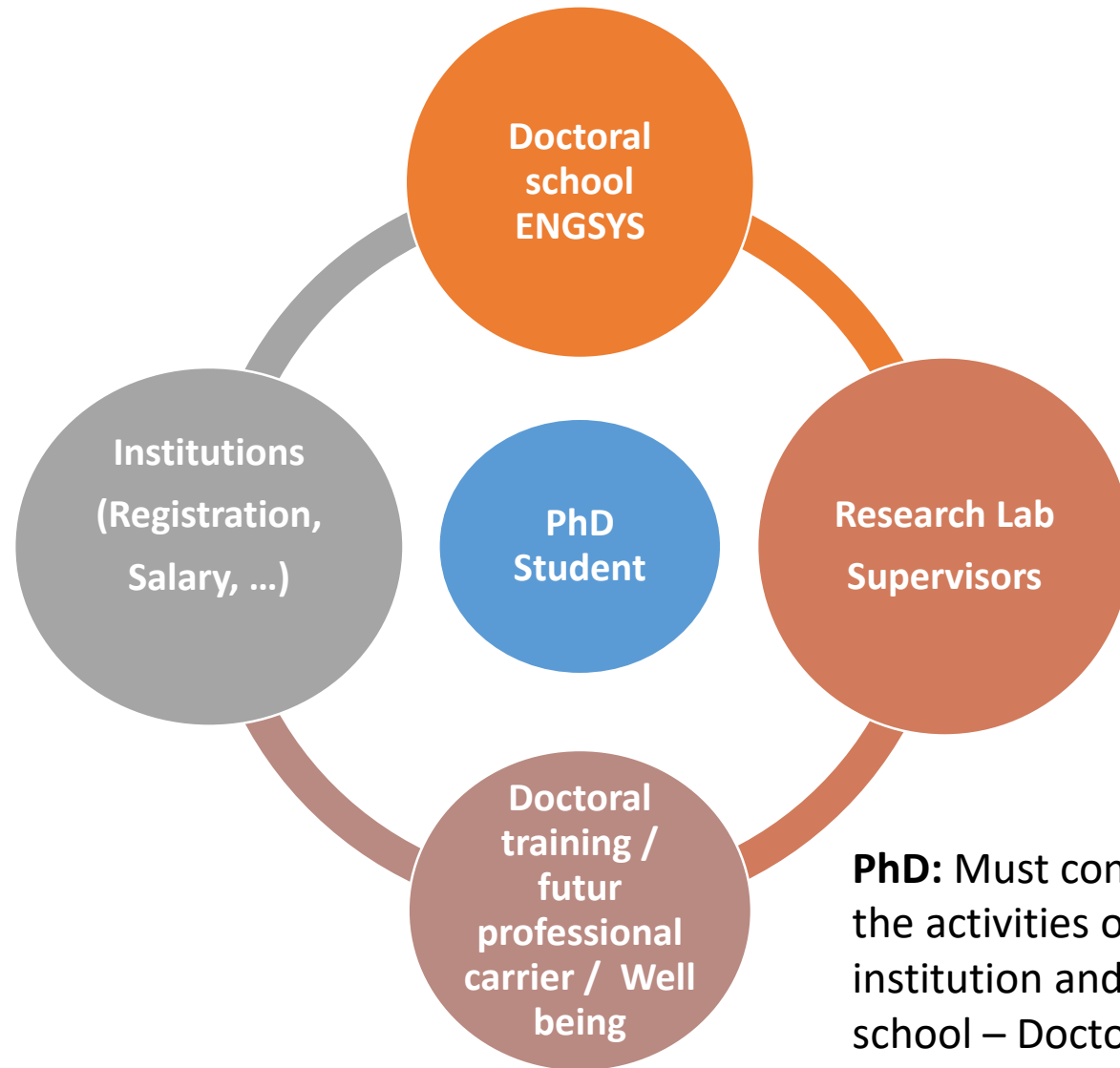
Individual monitoring committee (CSI) review

Events of Doctoral College 2023-2024

Open source – Sustainable development

Social network

Missions of Doctoral School



PhD: Must contribute to the activities organise by its institution and by Doctoral school – Doctoral College



Renew your registration

2 steps:

1- Pedagogical

You must meet all the requirements for a D1

- Supervisor
- Director of your Lab
- DED
- Doctoral school
 - Doctoral administration of your Institution

4 PhD students are late

2 –Administrative

Pay fees to your institution

Deadline: december 2023

If not, you are considered to have resigned

D2 challenges

During D1: You have learn a lot about your thesis subject

D2: - Become more autonomous

- Working hard to achieve results (Publications – conferences – mobility ...)

Why?

- Results are important for your future professional career
- A main part of your D3 is dedicated to your thesis manuscript and defense

D2 challenges – Doctoral training courses

Improving your skills to meet the requirements of a function of PhD (France rule – RNCP organisation)

RNCP: **R**épertoire **N**ational des **C**ertifications **P**rofessionnelles

In France: Difference between RNCP qualification and diploma

The diploma attests to a particular level and course of study, whether at school or university.

The **RNCP** title is mainly linked to a specific function. For example, the title of **engineer** or psychologist / **PhD**.

<https://www.youtube.com/live/BIBTU1MyiOw?si=2LB4qT85QQAyH8Y2>

In France: PhD diploma regarding companies

6 blocks of skills: **(in addition to scientific skills)**

- 1) Design and development of a research and development, studies and foresight approach [RNCP31437BC01]
- 2) Implementation of a research and development, studies and foresight approach [RNCP31437BC02]
- 3) Valorisation and transfer of the results of an R & D, studies and foresight [RNCP31437BC03]
- 4) International scientific and technological watch [RNCP31437BC04]
- 5) Training and dissemination of scientific and technical culture [RNCP31437BC05]
- 6) Management of teams dedicated to research and development, studies and foresight [RNCP31437BC06].

Training courses in your ADUM account // Skills portfolio

Espace personnel Mon profil Offres d'emploi Fiches pratiques Questions

Catalogue

Catalogue compétences RNCP

Formations en cours

Ajouter une formation

Catalogue des formations proposées affichées par bloc de compétences RNCP :

Bloc 1

Bloc 2

Bloc 3

Bloc 4

Bloc 5

Bloc 6

Compétences sociales

Conception et élaboration d'une démarche de recherche et développement, d'études et prospective

Catalogue

Catalogue compétences RNCP

Formations en cours

Ajouter une formation
'hors catalogue'

Ma situation

Démarche d'auto-évaluation de
compétences

Explications déposées par votre Établissement :

Démarche d'auto-évaluation des compétences pour les doctorants

Cet outil va vous accompagner tout au long de votre doctorat et après.

Objectif :

- Identifier et optimiser vos compétences et capacités pour vous permettre de valoriser l'expérience professionnelle qu'est le doctorat.
- Identifier clairement votre projet professionnel
- Identifier les formations et actions nécessaires pour atteindre vos objectifs
- Permettre de vous fixer des objectifs de travail accessibles permettant d'entretenir votre motivation

Les étapes de construction de l'auto-évaluation permettent de mettre en évidence les processus mis en jeu pour accéder aux compétences identifiées.

Cet outil va permettre une auto-évaluation de votre degré d'acquisition de la compétence, en visualisant, comparant et contextualisant vos compétences.

Il est important de vous positionner dans une démarche dynamique.

S'auto-évaluer

Voir la synthèse

Evaluation during the D2 - CSI

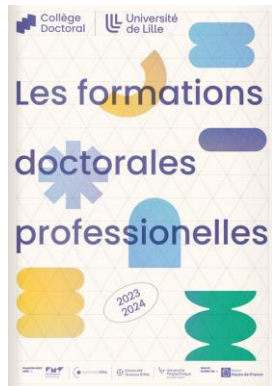
New

Comments on training courses – organization

Trainings are organized by

- Doctoral college (interdisciplinary – Open to all GS)
Catalogue 2023-2024 available on ADUM
- Graduate School (ENGYSYS – MADIS – SMRE) (EN)
(disciplinary and additional interdisciplinary (EN))
- Others partners (Graduate Programs IKS, IA program, ...)
- Master's courses

Training courses - Catalogue of doctoral college



Présentation de l'offre de formation



<https://doctorat.univ-lille.fr/college-doctoral/formations/>

Comments on trainings courses

When you register for a course, make sure you are available

GS ENGSYS does not partially validate training credits – No negotiation

Credits are allocated only after evaluation of the training by each PhD student

Training programs are costly

Trainers come from far away – it would be a shame if they didn't have anyone in front of them.

Comments on training courses – Credits

- The number of credits (CFD) to be collected depends on the PhD type:
 - **60 CFD** including at least 20 CFD on professional training for a **full time** PhD student
 - **30 CFD** in three training areas for a PhD student with a joint supervision between two institutions of different countries (**co-agreement or cotutelle**)
 - **40 CFD** distributed in the area of thematic training and research methodology for **CIFRE** PhD Student
- **At least one course about ethics** must be followed

Novelty of this year:

Possibility to increase your disciplinary skills with some courses of masters degree open to the PhDs students

See open courses and modalities on the website and ADUM

If you are following a master course in your field now,

- Fill the sign-in sheet with the professor in charge of the course and submit it on ADUM as external training

Language course – Intensive english – 1 full week

D2Day - Meeting program

PhD Associations (Consulid, ADSL, IEEE chapter)

ENGYSYS doctoral school / Graduate school

D2 challenges

Strategies for the professional career

Doctoral training courses

Portfolio

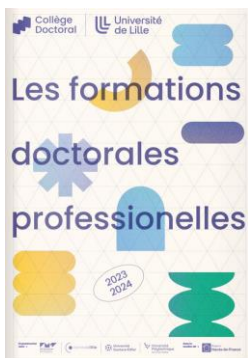
Individual monitoring committee (CSI) review

Events of Doctoral College 2023-2024

Open source – Sustainable development

Social network

Calendar Doctoral college 2023-2024



COMPEDOC (Ongoing)



11-13 Dec à Artois Expo à Arras
3 entreprises – 17 doctorants



Each doctoral student must make a clear, concise and convincing presentation of his/her research project in three minutes.



A 5-days residential seminar to prepare doctoral students to pursue their career in business

Talk like Ted

<https://doctorat.univ-lille.fr/college-doctoral/formations/>



- Follow the rules of your institution
- Follow the rule of your Lab



Fiches pratiques

Textes de référence

La thèse

Formations

Financement

Science ouverte

RNCP

Emploi

Science ouverte

› ***Le Passeport pour la science ouverte - Guide pratique à l'usage des doctorantes et des doctorants***

Un guide à destination des doctorants, coordonné par le CoSo (Comité pour la Science Ouverte) et l'Université de Lille, sous la direction du MESRI.
Existe aussi en anglais : <https://www.ouvrirelascience.fr/passport-for-open-science-a-practical-guide-for-phd-students/>.

› ***Former à la science ouverte tout au long de la thèse***

Un guide à destination des écoles doctorales, pour construire une offre de formation promouvant la science ouverte, également coordonné par le CoSo, sous la direction du MESRI.

› ***"Coup de toner sur la science ouverte"***

Une mini-série à destination des doctorants et des chercheurs (jeunes ou moins jeunes) produite par le SCD de l'Université Toulouse-Capitole et le Consortium Couperin, en partenariat avec l'Urfist Occitanie.

› Parution, en juillet 2021, du **2^e Plan national pour la Science Ouverte 2021-2024**.

› **Adoption, par l'Unesco, en novembre 2021, d'une Recommandation sur la Science Ouverte**

› Le MESRI a publié sa **Feuille de route 2021-2024 sur la politique des données, des algorithmes et des codes sources**, qui évoque notamment la gestion des données de la recherche.

Sustainable development



Competition: Video capsule $\leq 1\text{mn} - 2\text{mn}$ (deadline: December 17th, 12H)

Communication on the relation between your thesis topic and sustainable development

For the majority of CSI, everything is going very well

Take this opportunity to mention any problems before they become critical
(DEDs – GS) – (During the face-to-face meeting with the jury)

Some confidential information are transmitted only to the director of doctoral school

Our mission in mediation is to protect you (your rights).

Confidential contact if needed:

<https://edengsys.univ-lille.fr/news/maison-de-la-mediation-a-luniversite-de-lille>

ENGYSYS PhD professional careers

Today, we have a good feedback on the position of the ENGYSYS PhD in companies

Short presentation

ENGYSYS and MADIS are partners of the network REDOC SPI <https://www.redoc-spi.org/>

Linkedin account REDOC SPI: <https://www.linkedin.com/company/redoc-spi/>

Linkedin account ENGYSYS – MADIS doctoral schools:

<https://www.linkedin.com/groups/12416555/>

Create your LinkedIn account

You can mention

- your doctoral school
- Your institution
- Your Lab

Become a member of

REDOC SPI

SPI-ENGYSYS-MADIS-Lille-PhD/Docteurs/Doctorants

We will stay in contact with you during your professional career

Many other interesting calls/activities

Support for international mobility (Doctoral college – MOBLILEX
(twice/year) – IKS, ...)

Best thesis award

....

News on the website

Be curious and active ...

MAKE YOUR PHD A SUCCESS